



## HAI\*QPM on the SAP Platform

### Introduction

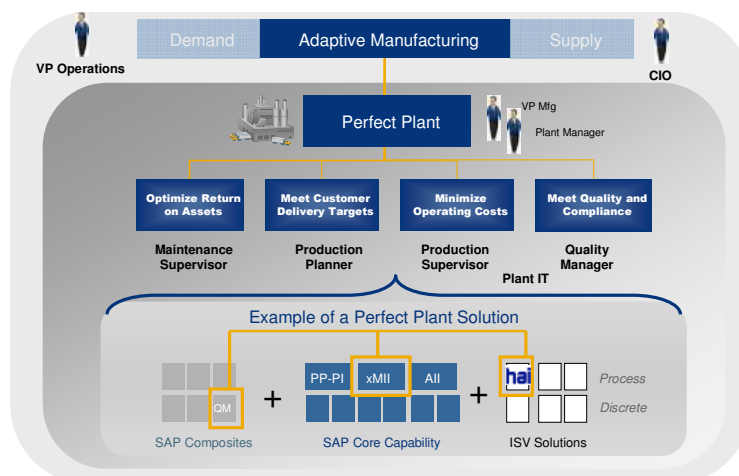
HAI is an Independent Software Vendor (ISV) of SAP, offering a solution in the SAP Ecosystem specifically for the SAP Perfect Plant Framework.



The SAP Ecosystem responds to a growing need for a more collaborative business approach. The SAP Developer Network, for instance, is a worldwide SAP Community where SAP developers co-innovate. In the Industry Value Network SAP works closely with leading-edge ISVs like HAI to enable superior innovation.

Serving as a blueprint for manufacturing transformation, SAP offers a Perfect Plant Framework by integrating planning, asset management, and execution with real-time visibility.

HAI\*QPM is a simple, yet powerful system enabling companies to create quick wins in the production- and quality environment, while keeping aligned with long-term SAP architecture strategies.



With HAI\*QPM the Total Cost of Ownership can be decreased substantially, since HAI\*QPM takes advantage of your existing IT infrastructure, enabling you to deliver information securely over intranets, extranets, or the Internet without the need for modifications.

### SAP NetWeaver

HAI\*QPM is based on SAP NetWeaver Java Web Application Server, providing a web based environment that runs on the SAP technology platform, yet kept aside of the main ERP system, as separate software.

SAP NetWeaver provides a highly flexible IT architecture platform developed to reduce IT complexity and increase business flexibility. The SAP NetWeaver platform facilitates integration with SAP enterprise software.

**SAP® Certified**  
**Powered by SAP NetWeaver®**

HAI\*QPM is Powered by SAP NetWeaver, a certification granted by SAP AG only to top-class applications complementary to SAP solutions and based on the SAP NetWeaver technology.

- The J2EE-DEP certificate ensures that the solution installs and works on the SAP NetWeaver Java Web Application Server.
- The EP-BP certificate confirms that the solution integrates the application correctly with the SAP NetWeaver Portal.

**MAKING DATA WORK**

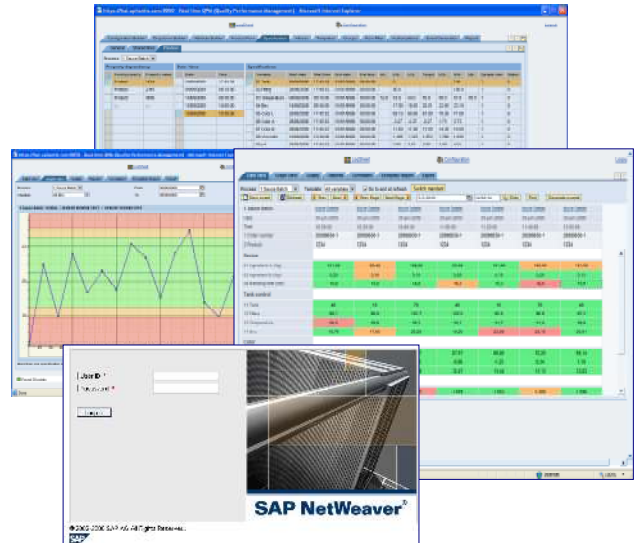
HAI - Tel +31(0)78-6135666 - Email: [info@hai.nl](mailto:info@hai.nl) - [www.hai.nl](http://www.hai.nl)

## User-interface

Special attention has been paid to ensure that the user-interface of HAI\*QPM is very simple, intuitive and user-friendly, which is vital for use at the plant floor.

Data-entry and an overview of previous and related measurements is combined in one view, also indicating non-conformance of measurements against specifications.

Standard SAP technologies for web applications have been used to ensure the familiar look-and-feel as other SAP applications.

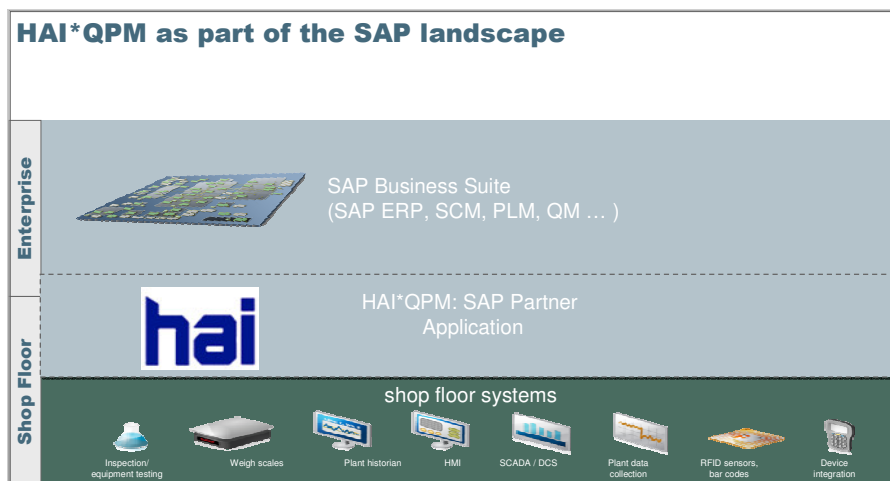


## Stand-alone or integrated part of SAP?

Although HAI\*QPM is designed to operate as part of the SAP landscape, you may decide to run HAI\*QPM independently.

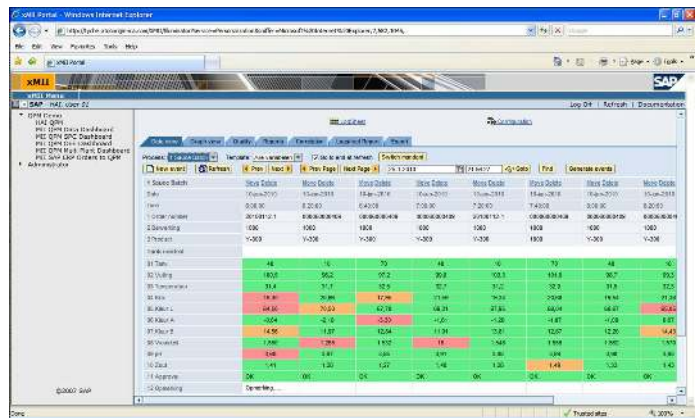
Alternatively, you can link your enterprise processes and master data with manufacturing processes to run your business based on a single version of the truth. So you have the visibility, responsiveness, and performance you need to succeed.

If desired, SAP master data, production orders, inspection lots, batch release etc. can be shared with HAI\*QPM.



**MAKING DATA WORK**

**HAI\*QPM as part of SAP MII**  
HAI\*QPM can be integrated as preconfigured best practice content to SAP MII. SAP MII is the Manufacturing Integration and Intelligence framework which can be used to connect the plant floor and the rest of the enterprise. It enables you to become an adaptive manufacturer, profitably replenishing your supply network while dynamically responding to unpredictable change.



SAP MII provides a direct connection between shop-floor systems and business operations. It ensures that all data that affects manufacturing is visible in real time – including information about orders, materials, equipment status, costs, and product quality. HAI\*QPM extends the SAP MII architecture by providing prebuilt, plant-, and role-specific composites to provide real-time manufacturing intelligence and visualize non-conformance.

HAI\*QPM as pre-configured content of SAP MII offers you unprecedented benefits, like:

- creating a flying start with SAP MII, accelerate time-to-value while ensuring success and capitalizing on the know-how contained in HAI\*QPM,
- quick and low-cost integration with ERP and plant floor systems
- possibilities to create your own additional KPIs and management dashboards

## Reporting & Management Dashboards and Cockpits

In addition to the available reports and analyses within HAI\*QPM, the various SAP BI tools can be used to extract information from the HAI\*QPM database.

If there is a need for real-time dashboards and manufacturing operations cockpits, the combination HAI\*QPM - SAP MII is very powerful.



With the data contained in HAI\*QPM, you can create your own real-time management dashboards with your company-specific KPIs.

This creates real-time visibility into manufacturing, supporting fast and accurate decisions in a responsive, agile company culture.

The screenshot above shows how you can monitor and benchmark multiple production lines and multiple manufacturing sites in real-time.

## MAKING DATA WORK